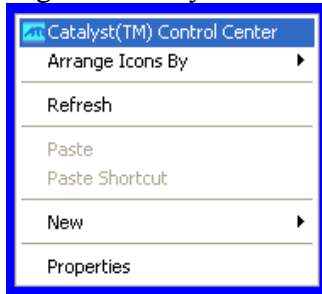
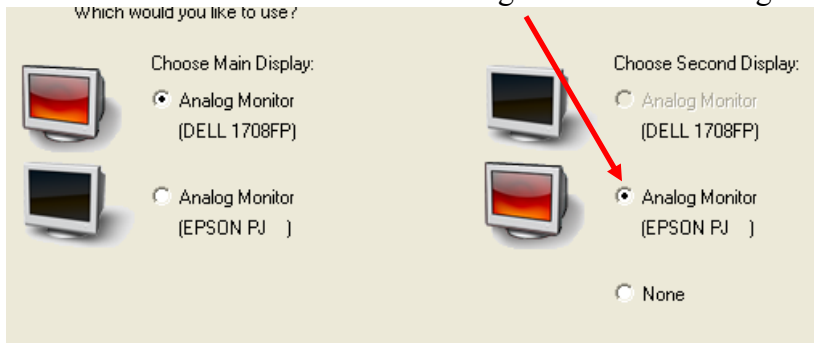


Enabling computer play-out to data projector (Optiplex 755)

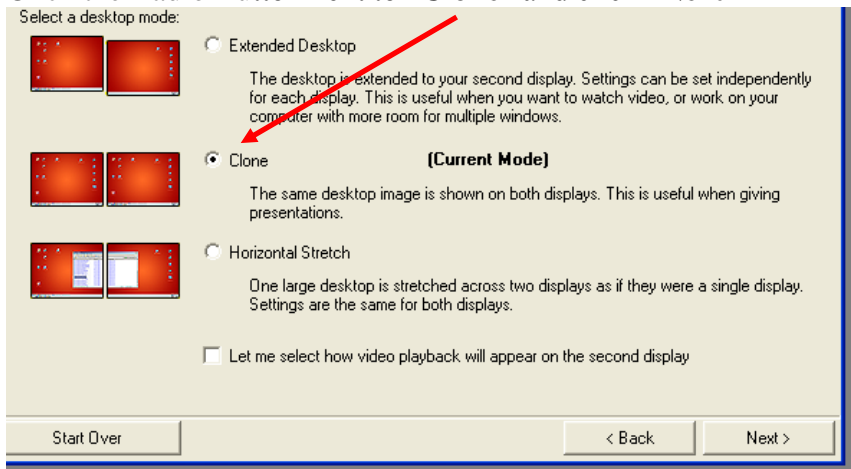
- Right-click anywhere on the desktop and select “Catalyst™ Control Center”



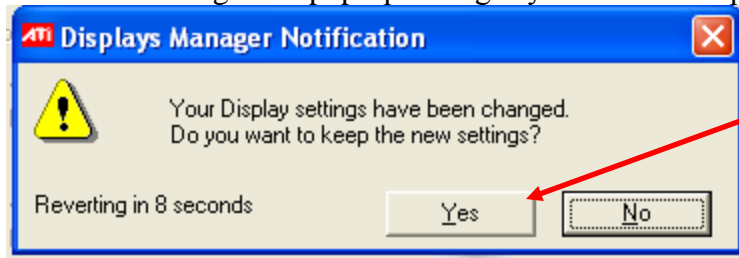
- Click “Next”
- Click “Go”
- Click the Radio Button next to “Analog Monitor” on the right hand side and click “Next”



- Click the Radio Button next to “Clone” and click “Next”



- ****This message will pop-up asking if you want to keep this setting. Click “YES”



- Click “Finish”
- Click “Exit”